

VISION FOR THE NEW

CYBER CENTER FOR EDUCATION & INNOVATION

Home of the National Cryptologic Museum



NATIONAL CRYPTOLOGIC
MUSEUM FOUNDATION

A PUBLIC-PRIVATE PARTNERSHIP WITH UNPARALLELED CYBER DEFENSE EXPERTISE.

The Cyber Center and Museum Master Plan includes:

- A new state-of-the-art Museum
- The Conference Center
- Vigilance Air Park
- Classroom facilities
- World class research and rare books library
- A comprehensive site and land use concept

Continued strong private and public leadership is needed to realize this challenging vision.



PROPOSED SITE PLAN

PLEASE JOIN US AND GET INVOLVED!



Your participation, volunteer leadership and support are urgently needed to help us conceptualize, capitalize and construct the new Cyber Center for Education & Innovation,

Home of the National Cryptologic Museum. Join us now! To discuss your interest in supporting our efforts to create this vital new resource, please contact:

MGEN Roderick J. Isler, USA (Ret)

Vice President, Cyber Center for Education & Innovation,
New Museum Project Campaign

National Cryptologic Museum Foundation

P.O. Box 1563

Millersville, MD 21108

Office: 443-292-0091

Cell: 301-785-0896

goaisler@aol.com

- 1 CCEI-NCM Parking, 491 spaces
- 2 CCEI-NCM
- 3 Museum and Conference Center Drop-off
- 4 Service Road / Loading Dock
- 5 Existing Museum
- 6 National Vigilance Park
- 7 Signage & Security Check Point
- 8 Colony Seven Road
- 9 Current NSA Parking (N1)
- 10 Current NSA Parking (N10)
- 11 Expanded NSA Parking (N10)
- 12 86 foot Security Set Back
- 13 Green Space and Future Memorial Park and Playground



HELP US ESTABLISH THIS VITAL NEW ASSET FOR OUR NATION.

THE CYBER CENTER FOR EDUCATION & INNOVATION, HOME OF THE NATIONAL CRYPTOLOGIC MUSEUM will recall and honor the service, sacrifice and contributions of the Cryptologic Community from the past and present; it will act as a catalyst for those who will serve in the future. It is destined to embody and illuminate the NSA/CSS core values of Cryptologic Excellence: Yesterday, Today and Tomorrow. It will advance the public's understanding and appreciation for the role the Cryptologic Community plays in America's national security.

The project is a private-public partnership of the National Cryptologic Museum Foundation and the National Security Agency.

The partnership team envisions the Cyber Center as an integrated multi-purpose facility serving public and private stakeholders with the goal of strengthening our nation's cybersecurity and defending critical infrastructure by bringing together government, industry and academia to promote the sharing of insight, knowledge and resources.



Message from Admiral Michael S. Rogers, USN
Commander, U.S. Cyber Command
Director, National Security Agency/Central Security Service

Lt Gen Kenneth Minihan, USAF (Ret)
Chairman, Founders Group
Cyber Center for Education & Innovation-
New Museum Project Campaign
National Cryptologic Museum Foundation

Dear General Minihan:

THE NATIONAL SECURITY AGENCY HAS PARTNERED WITH the National Cryptologic Museum Foundation for nearly two decades on the continued enrichment and enhancement of the National Cryptologic Museum. The Foundation and NSA share common goals of cultivating the cryptologic profession and motivating future generations of mathematicians, engineers, computer scientists, and linguists. The Museum is NSA's principal gateway to the public, sharing our cryptologic legacy, our place in world history, and our contributions to the Nation. The only public museum in the Intelligence Community, the National Cryptologic Museum has served as an invaluable educational tool, hosting tours for thousands of students and teachers each year. The museum library supports the exhibits and encourages visitors to research various areas of cryptologic history.

The Foundation is pursuing a vision of a new world-class facility that will host the National Cryptologic Museum and continue to celebrate cryptologic heroes and technologies of their trades. This vision includes:

- An expanded exhibit area and engaging interactive displays of our iconic artifacts and stories;
- An environmentally controlled library to house the Museum's collection of documents and rare books; and
- Classrooms and an auditorium that will support increased educational and public outreach, lectures, and special events.

We fully support that vision and are grateful for the hard work and commitment of the Foundation.

Michael S. Rogers
Admiral, U.S. Navy
Director, NSA

VV Our mission is to build and equip the Cyber Center for Education & Innovation (CCEI) and Museum dedicated to explaining the vital role cryptology, signals intelligence and cybersecurity play in defending our nation. It is a personal honor to help lead the private-public partnership between the National Cryptologic Museum Foundation (NCMF) and the National Security Agency that will seek to make this mission a reality.

- To **EDUCATE** the public about the role of cryptology, signals intelligence and cybersecurity in our nation's defense.

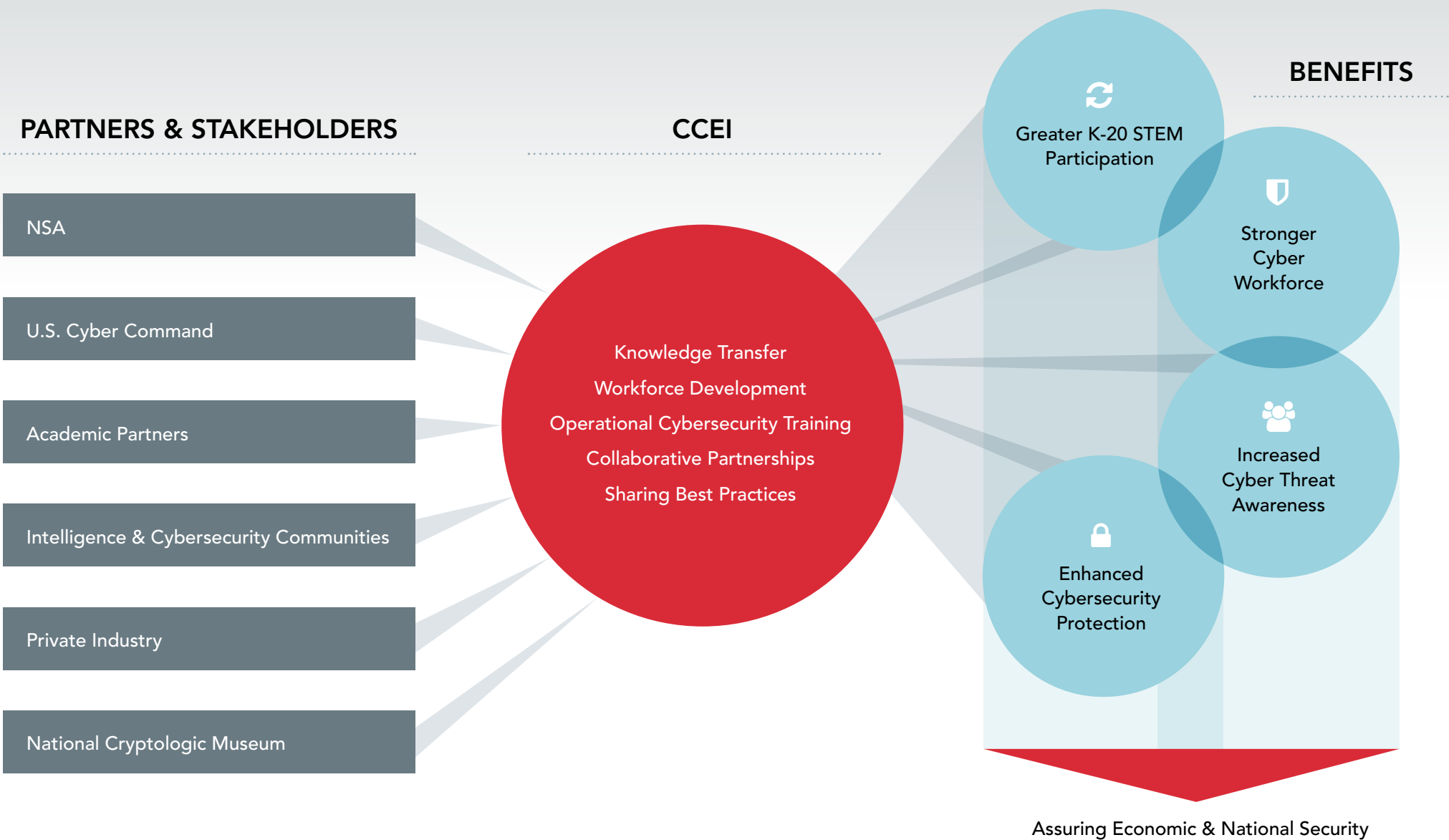
- While the NSA will assume the operating costs for the new facility, the burden of securing capital construction funding falls to the NCMF. For that reason, we are in the midst of a building campaign seeking roughly \$60 million from private and public sources. This campaign is led by a “Founders’ Group” consisting of distinguished and committed leaders from the corporate and philanthropic community—people who share and support the visionary goals of the project and wish to help make it a reality.

Sincerely,

He ..

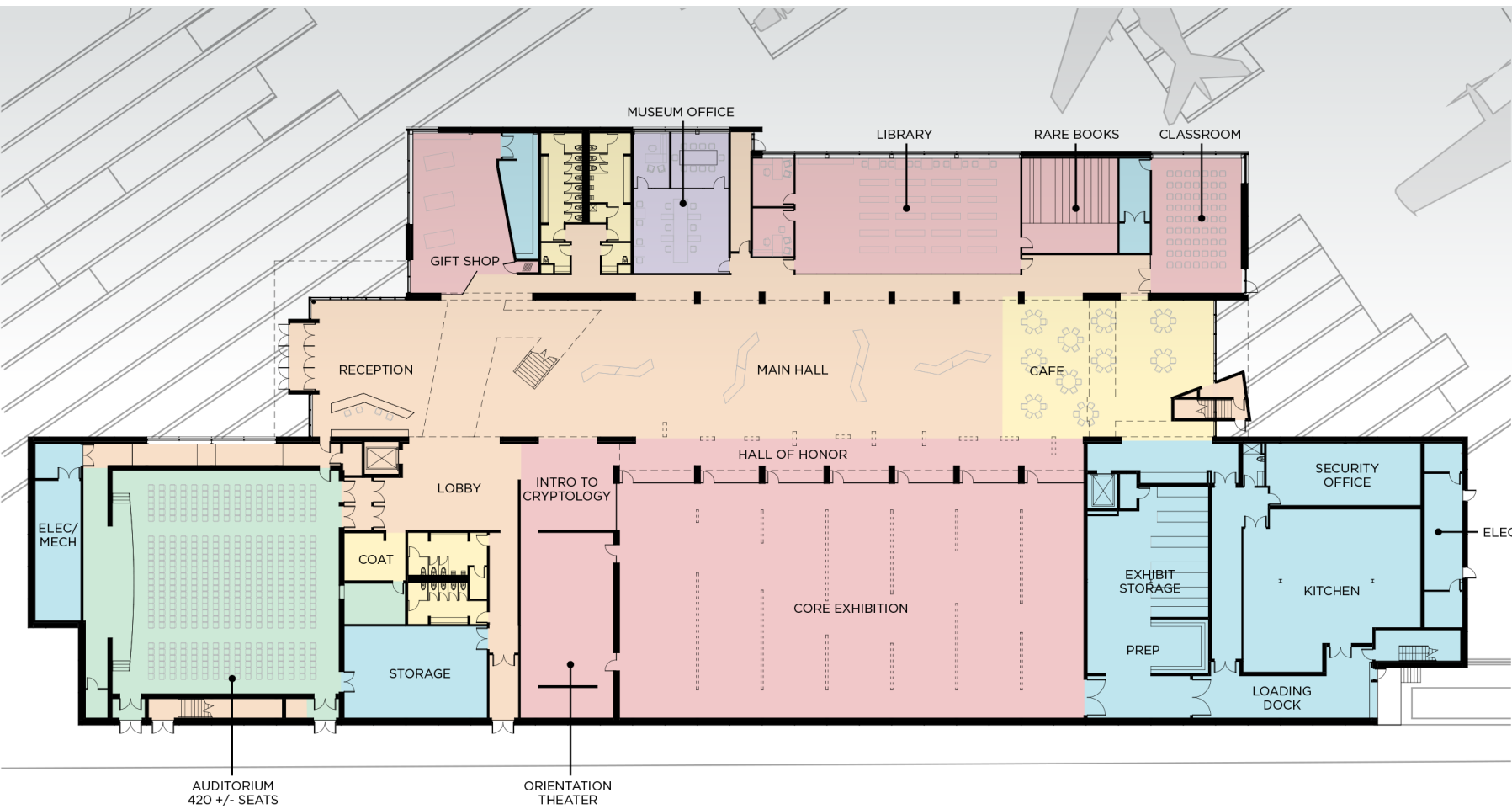


Vision for the Cyber Center for Education & Innovation





Vision for the Cyber Center for Education & Innovation

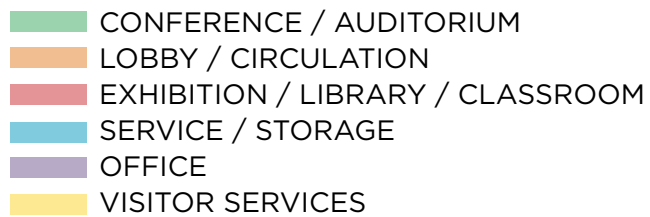


- CONFERENCE / AUDITORIUM
- LOBBY / CIRCULATION
- EXHIBITION / LIBRARY / CLASSROOM
- SERVICE / STORAGE
- OFFICE
- VISITOR SERVICES



FIRST FLOOR PLAN

E	N	O	P	Q	R	S	T	U	V	W	X	Y	Z	A	B	C	D	E	F	G	H
M	N	O	P	Q	R	S	T	U	V	W	X	Y	Z	A	B	C	D	E	F	G	H
O	P	Q	R	S	T	U	V	W	X	Y	Z	A	B	C	D	E	F	G	H	I	J
P	Q	R	S	T	U	V	W	X	Y	Z	A	B	C	D	E	F	G	H	I	J	K
Q	R	S	T	U	V	W	X	Y	Z	A	B	C	D	E	F	G	H	I	J	K	L
R	S	T	U	V	W	X	Y	Z	A	B	C	D	E	F	G	H	I	J	K	L	M



SECOND FLOOR PLAN

The Founders' Group Role

Current Founders' Group Membership



LtGen Kenneth A. Minihan
Chairman, Founders' Group
Former Director, NSA/CSS, Managing
Director, Paladin Capital Partners



Jim Allen
Executive Vice President
Client Service Officer for Cyber Account
Booz Allen Hamilton



Christian Anschutz
The Christian P. Anschutz
Foundation



Dr. Robert Caret
Chancellor, University
System of Maryland



William Dunahoo
President
Praxis Engineering



Scott Ernest
President, Textron Aviation



Robert P. Frisbie
VP/GM Global IT Solutions,
BAE Systems, Inc.



Mark Gerencser
Chairman, UMUC Ventures



Chris Goodrich
COO and EVP, Mantech Mission Cyber
and Intel Solutions Group



Thomas B. Howell
Chief Executive Officer,
TechUSA



Dr. David Kahn
Honorary Member,
Founders' Group

The Founders' Group, a lay leadership body, has been formed to spearhead the private-public capital campaign and help secure the project's financial needs.

This body has the following responsibilities:

- Provide private sector leadership to create the new Cyber Center and Museum.
- Advise about architectural/exhibit design and other project parameters.
- Shape the private-public fund raising campaign.
- Contribute directly and recruit potential donors from peer networks.
- Advocate for public funding with Foundation and NSA/CSS coordination.

Donors to our capital campaign will be provided recognition consistent with the following principles:

- **Recognition within the CCEI:** Major donors will be honored hierarchically in a recognition gallery and also may be recognized as sponsors of specific physical spaces or exhibits.
- **Founder-level recognition:** Founders and other major donors will receive exclusive invitations to high-level events.
- **Recognition in perpetuity:** Unlike with some charities, CCEI/NCM donors' gifts will receive permanent recognition.
- **Parity of recognition:** Donors will be recognized commensurate with giving level, with the largest donors receiving greatest visibility.
- **Publicity:** CCEI/NCM will help develop awareness campaigns to recognize major donors' gifts.

Current Founders' Group Membership



Bill Weber
CEO, KEYW Corporation



Bill Barroll
SVP for Asset Management/Leasing
COPT



Christopher Marzilli
President, Mission Systems
General Dynamics



Beatriz Schweitzer
Director of Community Outreach,
Schweitzer Engineering Laboratories



Edmund O. Schweitzer, III, Ph.D.
President, Schweitzer
Engineering Laboratories



Deon Viergutz
VP Cyber Solutions,
Lockheed Martin IS&GS National



Frederick Waddell
CEO, Northern Trust



David Wajsgras
President, Intelligence,
Information & Services,
Raytheon Company



Scott D. White
Vice President, Intelligence
Northrop Grumman



State of Maryland

While not a Founders' Group member, the State of Maryland has appropriated \$3.5 million in matching funds to date.

The capital campaign is organized as follows:

- The purpose of the ongoing “Quiet” phase is to organize the campaign, conduct major private and public donor development, pursue leadership giving, build momentum and create advocacy opportunities for the project without external fanfare.

- A minimum of 25 Founders recruited and solicited.
- A minimum of \$20 million in private and public funding commitments pledged or banked.
- Evidence of sufficient donor prospects to complete campaign.
- Impressive architecture designs & compelling exhibit plans completed.
- A positive public relations climate, conducive to effective campaigning.

Development of the new Cyber Center and Museum is being undertaken as a private-public partnership of the nonprofit National Cryptologic Museum Foundation (NCMF) and the NSA.

-



Current NCM Compared to New CCEI

Current NCM	New CCEI / Museum
SIZE	
19,000 sq. ft.	74,400 sq. ft.
CONFERENCE CENTER	
60 seats	420 seats (everyday use) 750 seats (when Main Hall used)
CLASSROOMS	
2 with 80 seats	1 with 60 seats each 2 with 50 seats each 3 with 30 seats each
LIBRARIES	
1: public access	2: public access + rare books
MUSEUM SPACE	
6,600 sq. ft.	17,600 sq. ft.

We are pleased to announce the following project milestones:

Architecture & Site

- Comprehensive site and land use plan developed.
- Preferred location adjacent to main NSA buildings secured.
- Concept Design and Schematic Design for the Cyber Center and Museum complete. Design Development begun.
- Exhibit concepts for Museum under development.
- Draft Environmental Assessment and Finding of No Significant Impact complete.

Financial Development

- Founders’ Group initiated as primary leadership cohort, multiple meetings held.
- Twenty Founders recruited and participating, numerous others awaiting finalization.
- \$15.5 million+ in funding secured, including first \$5 million+ individual gift.

- \$3.5 million in design funds secured from State of Maryland as initial disbursement against \$20 million long-term request.

Project Organization

- LtGen Kenneth Minihan assumes Founders’ Group Chairman role on private side.
- Full-time Chief Operating Officer on board (2014).
- NSA appoints a full-time Senior Project Director and an Installation and Logistics Program Manager (2015).
- FY 2017 National Defense Authorization Act includes necessary language to allow gifting of the facility to the NSA and lease back to the NCMF (2016).



NATIONAL CRYPTOLOGIC MUSEUM FOUNDATION


BOARD OF DIRECTORS

- Chris Inglis, Chairman,
Former Deputy Director NSA/CSS
- Richard C. Schaeffer, President
- Orville Lewis, Vice President
- Kirsten Eland, Secretary
- Edward Jacobs, Treasurer
- Eugene Becker, Chairman Emeritus
- Robert Rich, Vice President Emeritus,
Former Deputy Director NSA

BOARD MEMBERS

- Billy Bingham, BGen, USAF (Ret)
- William Black, Former Deputy Director, NSA
- Whitfield Diffie
- Elonka Dunin
- Rand Griffin
- Michael V. Hayden, Gen USAF (Ret),
Former Director NSA/CSS
- Roderick J. Isler, MGEN, USA (Ret)
- Dr. David Kahn
- Mark Lowenthal
- Kenneth A. Minihan, LtGen, USAF (Ret),
Former Director NSA/CSS
- Dr. Glen Miranker
- Dr. Ed Schweitzer
- Lisa Trombley
- Dr. Don Winter

Museum concept drawings and site maps provided courtesy
of Ziger/Snead Architects and Morris + Ritchie Associates, Inc.



THANK YOU! Planning, design and construction of the new Cyber Center for Education & Innovation, Home of the National Cryptologic Museum, is made possible thanks to the philanthropic generosity, stewardship and guidance provided by the project's Founders' Group. The individuals and entities who are recognized here as Founders have played, and continue to play, an outsized, instrumental role in bringing this venture forth from vision through concept and ever closer to reality.

On behalf of all our stakeholders, we at the National Cryptologic Museum Foundation extend our deepest gratitude to these benefactors for their leadership.

TIERED FOUNDERS' GROUP STRUCTURE



\$5 MILLION+

Dr. and Mrs. Edmund Schweitzer/Schweitzer Engineering Laboratories, Inc.



\$3 MILLION+

State of Maryland



\$1 MILLION+

Dr. David Kahn
KEYW Corporation

TEXTRON

Corporate Office Properties Trust



\$250,000-\$500,000

ManTech International

University System of Maryland
Praxis Engineering

BAE Systems
General Dynamics



\$100,000

Lockheed Martin
Northern Trust

Northrop Grumman
Raytheon
TECHUSA

Mr. Christian Anschutz
Mr. Mark Gerencser
Booz Allen Hamilton



CYBER CENTER FOR

EDUCATION & INNOVATION

HOME OF THE NATIONAL CRYPTOLOGIC MUSEUM



NATIONAL CRYPTOLOGIC
MUSEUM FOUNDATION

A PUBLIC-PRIVATE PARTNERSHIP WITH UNPARALLELED CYBER DEFENSE EXPERTISE.

For more information | CCEI@cryptologicfoundation.org | <http://cryptologicfoundation.org/visit/goal> | 443-292-0091